



April 9, 2019

Montana Fish and Wildlife Conservation Trust
P.O. Box 1993
Helena, MT 59624

Dear Montana Fish and Wildlife Conservation Trust:

The Rocky Mountain Elk Foundation is pleased to present the Montana Fish and Wildlife Conservation Trust the attached application to fund the 620-acre Garrity Mountain Wildlife Management Area Stumptown Addition Acquisition in Deer Lodge County, Montana. The Rocky Mountain Elk Foundation respectfully requests financial support to acquire and convey the Stumptown Addition to Montana Fish, Wildlife and Parks for inclusion in the Garrity Mountain Wildlife Management Area.

Once complete, the Stumptown Addition will support the following Montana Fish and Wildlife Conservation Trust objectives:

- a. Conserve approximately 620 acres of conifer forest, aspen and grassland habitats for a suite of game and nongame species, such as elk, raptors and songbirds.
- b. Conserve approximately 2.13 miles of perennial and intermittent streams, including a stretch of Warm Springs Creek, a tributary of the Clark Fork River.
- c. Expand opportunities for recreational activities such as hunting, fishing, birdwatching and hiking by 620 acres.
- d. Improve public access to the 620 acres acquired and approximately 2,015 acres of Garrity Mountain Wildlife Management Area lands adjacent to the Property.

Please contact Mike Mueller, our Senior Lands Program Manager, at (406) 493-6650 or mmueller@rmef.org if you have any questions.

Sincerely,

R. Kyle Weaver
President and Chief Executive Officer

Montana Fish and Wildlife Conservation Trust

HABITAT AND RECREATIONAL ACCESS PROJECT

1. Project Title: **Garrity Mountain Wildlife Management Area Stumptown Addition Acquisition**

2. Project Description:

The proposed 620 acre acquisition project will conserve habitat for fish and wildlife, enhance public recreation opportunities and improve public access to the Garrity Mountain Wildlife Management Area (GMWMA) outside of Anaconda, Montana. The Rocky Mountain Elk Foundation (RMEF) respectfully requests financial support to complete the fee-simple acquisition of 620 acres of land owned by the Dvorak Family for conveyance to Montana Fish, Wildlife and Parks (MFWP) for inclusion in the GMWMA.

The proposed GMWMA Stumptown Acquisition (Stumptown Acquisition) will, when completed, support the following Montana Fish and Wildlife Conservation Trust (MFWCT) objectives:

- a. **Conserve Wildlife Habitat:** Acquisition and conveyance will permanently protect approximately 620 acres of conifer forests, aspen stands and grassland habitats for a host of game and nongame species. Wildlife such as elk, mule and white-tailed deer, moose, raptors and songbirds will benefit from protection of the Stumptown Property (Property).
- b. **Conserve Fisheries Habitat, including Riparian Habitat:** Acquisition and conveyance will conserve approximately 2.13 miles of perennial and intermittent streams, including approximately 0.7 miles of instream habitat in Warm Springs Creek, and approximately 51 acres of adjacent riparian habitat for the benefit of fish, such as bull trout and Westslope cutthroat trout, and wildlife, such as the western toad, hoary bat, great blue heron, Lewis's woodpecker, and veery.
- c. **Enhance Public Hunting, Fishing and Recreational Opportunities:** Once acquired, RMEF will convey the Property to MFWP for inclusion in the GMWMA. Transferring the Property from private to public ownership will expand public land available for recreational opportunities, including hunting, hiking, birdwatching and fishing, within close proximity to Anaconda and Butte.
- d. **Improve Public Access to Public Lands:** Once complete, the Property will improve walk-in access to approximately 2,015 acres of the GMWMA in an area with limited access due to rugged terrain and surrounding private land ownership. The Property will provide another access point to Warm Springs Creek for anglers and other water-based recreationists.

3. Project Location:

The Property sits approximately 2 miles west of Anaconda and approximately 25 miles northwest of Butte in Deer Lodge County, Montana. The approximately 10,000-acre GMWMA abuts the south and west boundaries of the Property. The 620-acre Property encompasses approximately 2.13 miles of perennial and intermittent streams, including approximately 0.7 miles of Warm Springs Creek, a significant perennial stream that flows into the Clark Fork River approximately 13 miles downstream. The Property is located in Montana Township 5 North, Range 11 West. Please see the attached maps for additional project location information.

4. Submitted By: The project is submitted by:

Rocky Mountain Elk Foundation, Inc.
5705 Grant Creek Road
Missoula, MT 59808

Mike Mueller, Lands Program Manager
Office: (406) 493-6650
Cell: (406) 531-8297
mmueller@rmef.org

5. Coordinated With: The project is being coordinated with:

- Raymond and Roberta Dvorak
- MFWP
- Montana Department of Justice's Natural Resource Damage Program

6. Project Type:

The Rocky Mountain Elk Foundation and MFWP are partnering with a private landowner, the Dvorak Family, to permanently protect 620 acres adjacent to the GMWMA. If full funding is actualized, the Property will be acquired and conveyed to MFWP for inclusion in the GMWMA and managed as public lands. Once complete, the Stumptown Addition will: (1) conserve wildlife habitat; (2) conserve fisheries and riparian habitat; (3) enhance public hunting, fishing and recreation opportunities; and, (4) improve public access to public land.

Conserve Wildlife Habitat

The Stumptown Addition will conserve approximately 620 acres of diverse wildlife habitat ranging from 5,500 to 6,300 feet above sea level. Located in the Flint Creek-Anaconda Mountains Ecoregion, conifer forests interspersed with grasslands and aspen stands comprise the Property's higher elevations. A riparian corridor along Warm Springs Creek spans the north-northeast section of the Property and supports a mix of willows, alders and cottonwoods. Wildlife such as elk, mule and white-tailed deer, bighorn sheep, moose, raptors and songbirds will benefit from the protection of the Property's habitats. Please see the attachment titled *Select Special Status Species on the Garrity Mountain Wildlife Management Area Stumptown Addition* for a brief list of species that may benefit from the proposed project.

The proposed project will further the goals stated in Montana's 2015 State Wildlife Action Plan (SWAP). The SWAP identifies Community Types of Greatest Conservation Need (CTGCN) and prioritizes CTGCN by tiers ranging from Tier I (those with the greatest conservation need) to Tier III (those with a lower conservation need). Tier I CTGCN indicates "[t]here is a clear obligation to use resources to implement conservation actions that provide direct benefit to these community types." Tier I CTGCNs cover approximately 93% (or 576.66 acres) of the Property and include the following community types: (1) conifer-dominated forest and woodland (xeric-mesic); (2) montane grassland; (3) sagebrush steppe; (4) deciduous dominated forest and woodland; and, (5) floodplain and riparian. The SWAP provides an extensive list of Species of Greatest Conservation Need (SGCN) that will directly benefit from the conservation of these Tier I CTGCN, including bull trout, wolverine, fisher, Preble's shrew, fringed myotis, northern goshawk, and great gray owl. Please see the attachment titled *Garrity Mountain Wildlife Management Area Stumptown Addition Crucial Habitats* for additional information.

The SWAP promotes prioritizing acquisitions adjacent to other conserved properties to protect habitat linkage across the landscape to prevent further habitat fragmentation and impacts to CTGCN and associated SGCN. Once complete, acquisition of the Stumptown Addition will expand the GMWMA by 620 acres. The Deerlodge National Forest borders the GMWMA and links to the extensive, nearby Mount Haggin Wildlife Management Area. Wildlife move back and forth across this expansive landscape seasonally. According to MFWP, the Warm Springs Creek corridor provides critical linkage between the Upper Deer Lodge Valley and the Flint Creek Valley, two major valleys threatened with continued development. Conserving the Property will ensure this corridor remains intact for wildlife movement in perpetuity.

Conserve Fisheries Habitat, including Riparian Habitat

Extraordinary fish habitat will be permanently protected from further fragmentation through acquisition and conveyance of the Stumptown Addition. The Property borders approximately 2.13 miles of perennial and intermittent streams, including a 0.7 mile stretch of Warm Springs Creek, a headwater tributary of the Clark Fork River. Approximately 51 acres of riparian habitat (a Tier I CTGCN) buffer these streams, filtering sediments and other pollutants from water flowing overland into the stream. Almost one additional mile of Warm Springs Creek parallels the downslope side of the Property. The Property lies within the Warm Springs Creek Tier I Aquatic Focal Area and the Georgetown Lake – Philipsburg Tier II Terrestrial Focal Area identified in the SWAP. The large amount of aspen and riparian habitats, and high-value winter range for big game, make this Property a top priority for “Species of Economic and Recreational Importance” and “Habitat for Species of Concern” within the MFWP Crucial Areas Planning System, according to MFWP. Conservation of the Property will support MFWP’s priorities and prevent development or other forms of degradation of this key riparian and instream habitat.

Acquisition and conveyance to MFWP for management as fish and wildlife habitat will benefit existing and future fish populations. Warm Springs Creek supports the Clark Fork River’s most-upstream population of bull trout, a Federally-threatened species, according to the U.S. Fish and Wildlife Service. The Creek is listed as “Critical Habitat” for bull trout, reflecting the species’ presence in the stream at the time of designation under the Endangered Species Act. MFWP indicates brook, rainbow and Westslope cutthroat trout also use the high-quality instream habitat within Warm Springs Creek. Other wildlife such as mink, beaver, a variety of songbirds and raptors, bats and amphibians use Warm Springs Creek and the surrounding riparian habitat. Conservation of the Property around Warm Springs Creek will protect high-quality instream and riparian habitats for fish and many other species.

Enhance Public Hunting, Fishing and Recreational Opportunities

Inclusion of the Property in the GMWMA will enhance public recreation opportunities for hunting, fishing, wildlife watching, hiking, and other activities by approximately 620 acres. Under MFWP ownership, the Property will be managed to provide numerous recreation opportunities, including big game and upland bird hunting, trapping, fishing, wildlife watching and hiking. The gentle terrain bordering Warm Springs Creek will provide relatively easy access for fishing, swimming and similar types of water-based recreation. Transferring the Property from private to public ownership will expand public recreation opportunities in the area by approximately 620 acres and enhance access to Warm Springs Creek.

Improve Public Access to Public Lands

Rugged terrain and the surrounding land ownership limit access to the area of the GMWMA adjacent to the Property. Under MFWP management, all 620 acquired acres will be accessible to the public for recreation opportunities. Stumptown Road, a primary road paralleling Warm Springs Creek, passes through the northeast corner of the Property and will provide access to the acquired acres and the GMWMA beyond. Once acquired, the Property will be included in the GMWMA and managed as wildlife habitat. MFWP anticipates closing the acquired acres to public access from December 1st to May 31st annually for the benefit of wildlife using the Property and adjacent habitat. Outside of this seasonal closure, the Property will improve walk-in access to approximately 2,015 acres of the GMWMA, according to RMEF’s access metrics, and will provide another access point to Warm Springs Creek for recreationists.

7. Management of Properties:

Once the purchase option is signed and all funds are secured, RMEF will acquire and convey the Property to the MFWP, who will hold the title in fee, for management as wildlife habitat. After RMEF's acquisition and conveyance to MFWP, we anticipate the MFWCT will have access to the Property to make field inspections and to monitor progress and compliance with a grant agreement, if awarded. RMEF does not anticipate any restrictions on future land management decisions for the acquired land.

8. Size of Project Area:

The total project area is 620 acres.

- Approximately 620 acres of habitat will be permanently protected and will expand a corridor for wildlife moving between the Upper Deer Lodge and Flint Creek Valleys.
- Approximately 2.13 miles of instream habitat, and approximately 51 acres of riparian habitat, will be permanently protected for fish and other wildlife when this project is complete.
- Approximately 620 acres and 0.7 miles of streams will be available for public hunting, fishing and other recreational opportunities when managed by MFWP.
- Approximately 620 acres will be opened to public access, and access to approximately 2,015 acres will be improved once the project is complete.

9. Implementation Schedule:

RMEF and MFWP anticipate completing the Stumptown Addition in 2019-20 if our fundraising efforts are successful.

10. Total Project Cost:

RMEF estimates the land value to be \$1,700,000. A qualified appraiser will determine the land value when completing an appraisal. RMEF has ordered an appraisal and anticipates it will be available before June 30, 2019.

Below please find a budget that estimates costs associated with the Stumptown Addition:

Estimated Appraisal Value	\$1,700,000
----------------------------------	--------------------

	MFWCT	Other Funders	Total
Land Acquisition Cost	\$200,000	\$1,500,000	\$1,700,000
Due Diligence Costs		\$11,500	\$11,500
Total Cost	\$200,000	\$1,511,500	\$1,711,500

11. MFWCT Funds:

RMEF respectfully requests \$200,000 in funding support from MFWCT to complete this project. If awarded, any MFWCT funding will be applied to the purchase price only.

12. Matching / Cooperator Funds:

Please see Section 13 below for details on entities we hope to partner with to complete the Stumptown Addition. We anticipate submitting funding requests to the partners below in the coming year.

13. List all matching funds and their source:

If our estimated value remains accurate, RMEF and MFWP will need to secure approximately \$1,700,000 to complete the Stumptown Addition. RMEF anticipates reaching out to the Natural Resource Damage Program, Mule Deer Foundation, other conservation groups and private donors to raise the acquisition price. RMEF anticipates contributing to the project as well.

14. Project Objectives:

As noted above, the objectives of the Stumptown Addition include:

- (a) The conservation of 620 acres of wildlife habitat along a movement corridor;
- (b) The conservation of 2.13 miles of streams and 51 acres of adjacent riparian habitat for fish and wildlife;
- (c) Enhancement of public hunting, fishing and other recreation opportunities by 620 acres; and,
- (d) Improved public access to the acquired acres and approximately 2,015 acres of the GMWMA.

15. Project Strategies:

To achieve these objectives, RMEF is working to finalize a purchase option with the landowner. RMEF and MFWP are partnering to complete due diligence activities such as obtaining an appraisal, conducting a title review, assessing the Property for hazardous materials and evaluating the potential of mineral development on the Property. Once all due diligence is complete and all funding is secured, RMEF will acquire the Property from the landowner and convey the land to MFWP for management as public land.

Anticipated Project Schedule for the Stumptown Addition		
Title Review	April 4, 2019	RMEF
Qualified Appraisal	June 30, 2019	RMEF, MFWP and Katie Rickett (the appraiser)
Purchase Option with Landowners	July 1, 2019	RMEF and the Landowners
Hazardous Materials Assessment	July, 2019	RMEF and MFWP
Mineral Report	July, 2019	RMEF and MFWP
Closing	December, 2019	MFWP and RMEF

15. Area Description:

Please see the attached maps and photos for a description of the project area.

The fee title is currently held by Raymond J. and Roberta J. Dvorak. A small portion of the Property has been subdivided and the lots are listed for sale on the open market. The Property sits along Stumptown Road, a significant road leading west of Anaconda, Montana. By acquiring this Property and placing it in public ownership, the Property will be protected from residential development that could have irreversible impacts on fish and wildlife habitat and wildlife movements on the adjacent GMWMA and the surrounding Beaverhead-Deerlodge National Forest.

16. Project Analysis:

The Stumptown Addition will address MFWCT's objectives to: (a) conserve wildlife habitat; (b) conserve fisheries and riparian habitat; (c) enhance public hunting, fishing and recreation opportunities; and, (d) improve public access to public lands.

The completed project will take 620 acres of private land adjacent to the GMWMA and consolidate it into the GMWMA for the benefit of fish and wildlife. Overall management opportunities will be enhanced by expanding a continuous landscape for the implementation of management activities that benefit fish and wildlife. The GMWMA is well known by Montana hunters and other recreationists. Information about the GMWMA is available on MFWP's website. Hunting, fishing and other recreation opportunities will be managed similar to those on the adjacent GMWMA.

RMEF anticipates issuing a press release in Montana to inform the public that the land was purchased and added to the GMWMA with support from MFWCT. RMEF and MFWP anticipate arranging for a sign to be placed on the Property, which will recognize MFWCT's contribution to the project.

17. Existing Project Area Land Management Activities:

Under MFWP ownership, the Property would not require substantial monitoring needs once incorporated into the adjacent GMWMA. Grazing is not allowed on the GMWMA and will not be allowed on this parcel once acquired. MFWP anticipates developing a timber management plan for the entire GMWMA and will include the Property in this effort once the project is complete.

18. Use of MFWCT Funds:

If awarded, MFWCT funding will be used solely for the direct land purchase. No due diligence or administrative costs will be covered by MFWCT funds.

19. Project Monitoring Plan:

Under MFWP ownership, the Property will be managed in a manner similar to the existing GMWMA. Management goals for wildlife and fisheries populations, terrestrial and aquatic habitat, and public recreation opportunities will parallel those on the existing GMWMA. The GMWMA management plan, if developed, will guide MFWP's monitoring and management of the acquired lands. MFWP anticipates increasing staff presence to monitor public use and maintain fences, roads and quality habitat.

20. Additional Comments:

The Stumptown Addition will likely receive widespread public support and interest given the close proximity to Butte, Anaconda and a complex of other protected lands in the GMWMA and Beaverhead-Deerlodge National Forest. On February 20th, RMEF and MFWP staff presented this project idea to the Anaconda Sportsmen's Club and answered questions. Following the presentation, the Club unanimously voted to support this project and the Property's inclusion in the GMWMA.

In summary, this project will:

- a. **Conserve Wildlife Habitat:** Acquisition and conveyance will permanently protect approximately 620 acres of conifer forests, aspen stands and grassland habitats for a host of game and nongame species. Wildlife such as elk, mule and white-tailed deer, moose, raptors and songbirds will benefit from protection of the Property.
- b. **Conserve Fisheries Habitat, including Riparian Habitat:** Acquisition and conveyance will conserve approximately 2.13 miles of perennial and intermittent streams, including approximately 0.7 miles of instream habitat in Warm Springs Creek, and approximately 51 acres of adjacent riparian habitat for the benefit of fish, such as bull trout and Westslope cutthroat trout, and wildlife, such as the western toad, hoary bat, great blue heron, Lewis's woodpecker, and veery.
- c. **Enhance Public Hunting, Fishing and Recreational Opportunities:** Once acquired, RMEF will convey the Property to MFWP for inclusion in the GMWMA. Transferring the Property from private to public ownership will expand public land available for recreational opportunities, including hunting, hiking, birdwatching and fishing, within close proximity to Anaconda and Butte.
- d. **Improve Public Access to Public Lands:** Once complete, the Property will improve walk-in access to approximately 2,015 acres of the GMWMA in an area with limited access due to rugged terrain and surrounding private land ownership. The Property will provide another access point to Warm Springs Creek for anglers and other water-based recreationists.



GARRITY MOUNTAIN WMA STUMPTOWN ADDITION

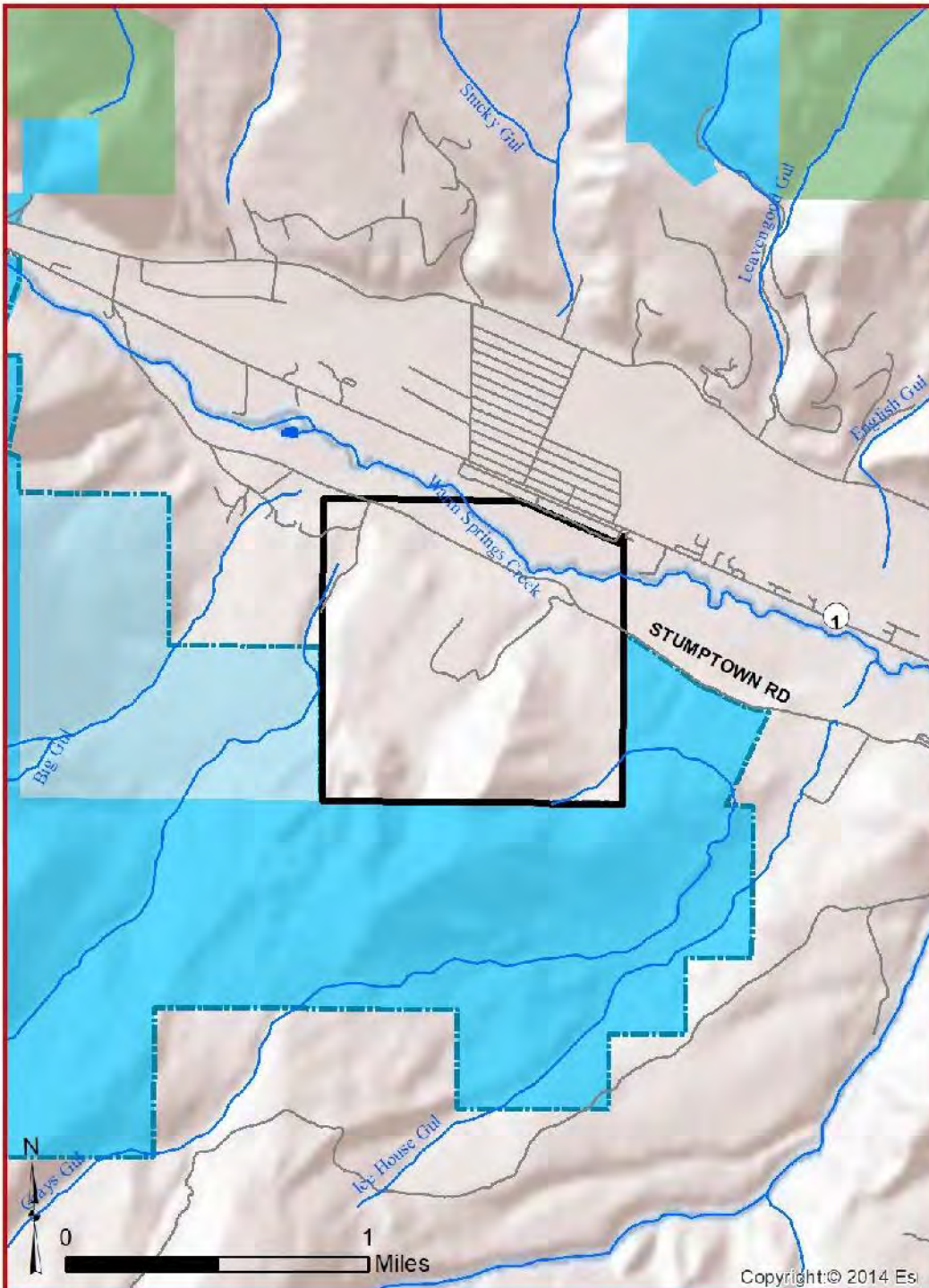
Deer Lodge County, Montana

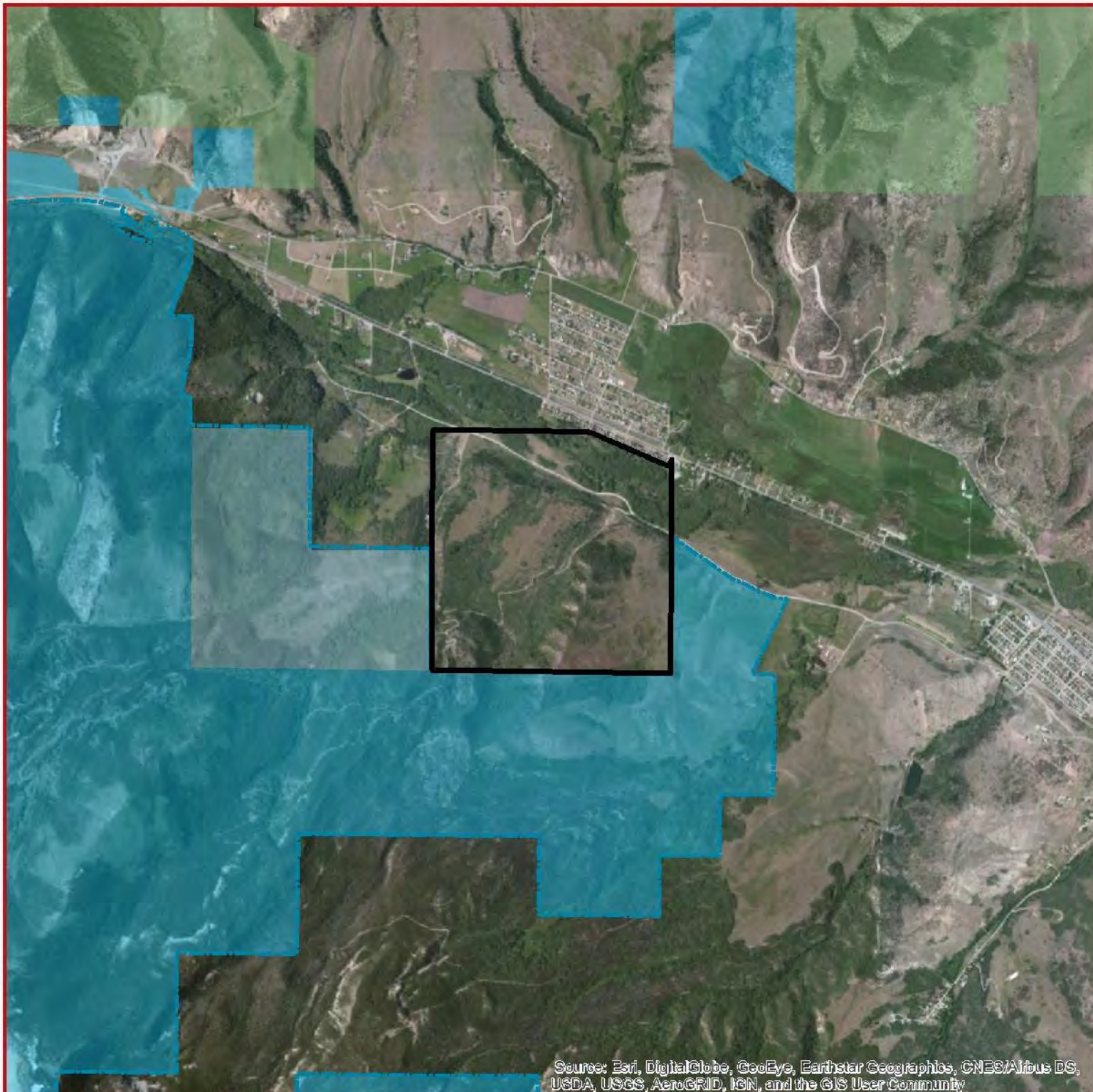
Legend

- Land Protection Project
- Habitat & Wildlife Stewardship Project
- Stream
- Road
- Garritty Mountain WMA Stumptown Addition
- Garritty Mtn WMA
- Beaverhead-Deerlodge National Forest
- Montana Fish, Wildlife, and Parks
- Montana State Trust Lands



Note: This map is intended as a
general visual reference only.
GarrittyAdditionMT_BoardMap.mxd
4/2/2019





Source: Esri, DigitalGlobe, GeoEye, Earthstar Geographics, CNES/Airbus DS, USDA, USGS, AeroGRID, IGN, and the GIS User Community



GARRITY MOUNTAIN WMA STUMPTOWN ADDITION

Deer Lodge County, Montana



0 1 Miles

Note: This map is intended as a
general visual reference only.
GarrityAdditionMT_Aerial.mxd
4/2/2019

LEGEND

-  Garrity Mountain WMA Stumptown Addition
-  Garrity Mtn WMA
-  Beaverhead-Deerlodge National Forest
-  Montana Fish, Wildlife, and Parks
-  Montana State Trust Lands



GARRITY MOUNTAIN WMA STUMPTOWN ADDITION

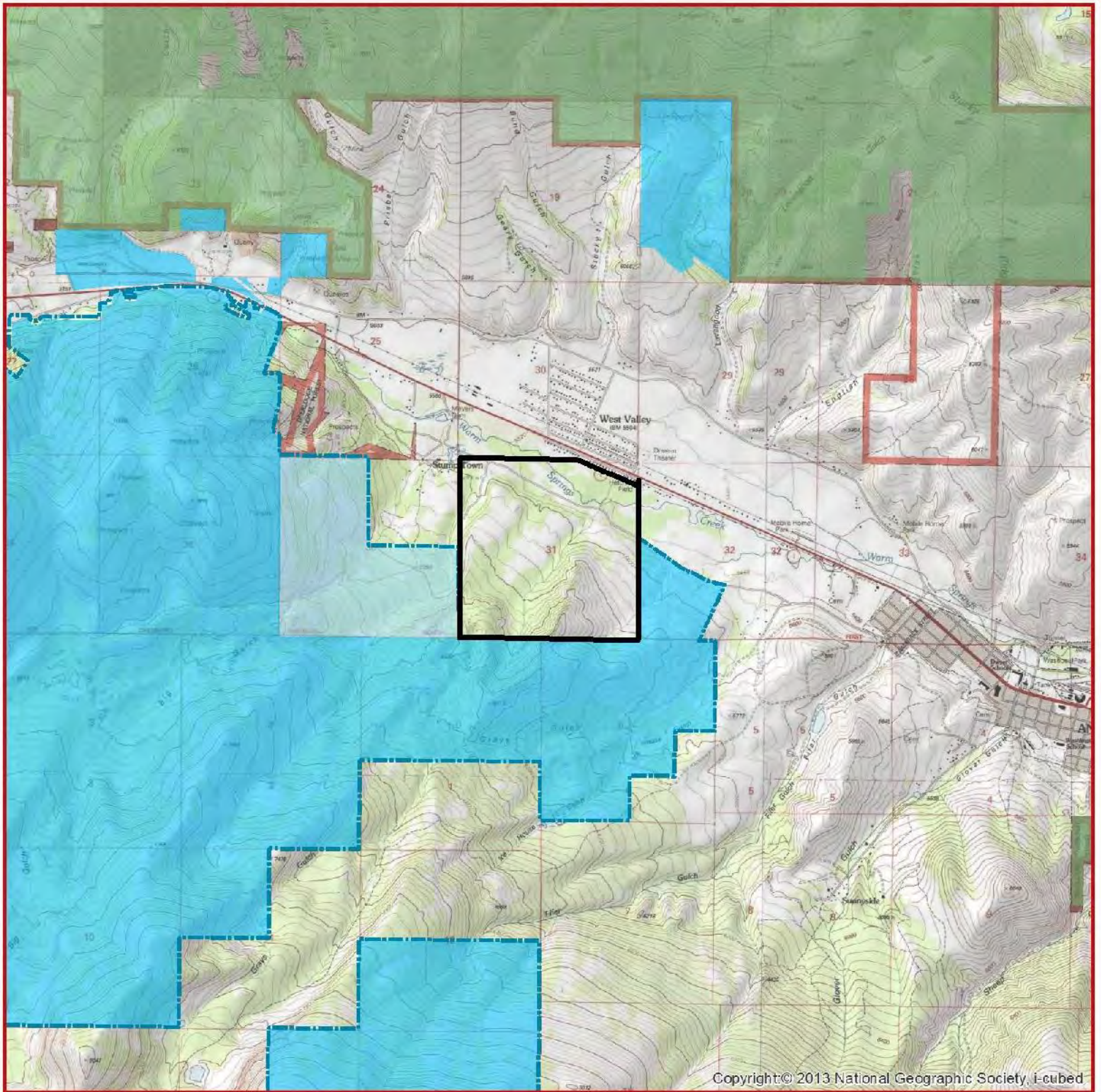
Deer Lodge County, Montana

Legend

- Garrity Mountain WMA Stumptown Addition
- Beaverhead-Deerlodge National Forest
- Montana Fish, Wildlife, and Parks
- Montana State Trust Lands



Note: This map is intended as a
general visual reference only.
GarrityAdditionMT_3DView.mxd
4/5/2019



GARRITY MOUNTAIN WMA STUMPTOWN ADDITION






Deer Lodge County, Montana

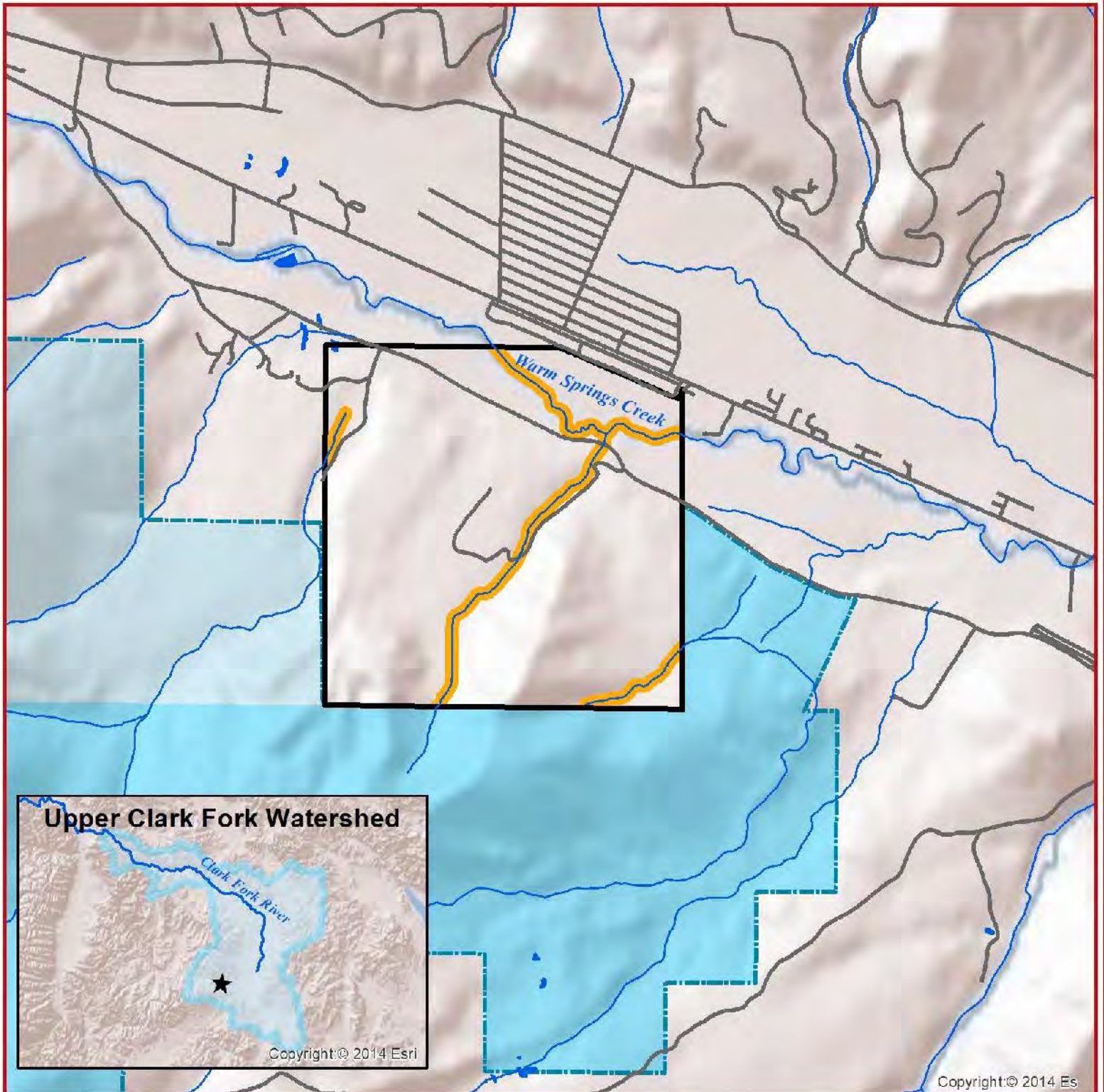


0 1 Miles

Note: This map is intended as a
general visual reference only.
GarryAdditionMT_Topo.mxd
4/2/2019

LEGEND

-  Garry Mountain WMA Stumptown Addition
-  Garry Mtn WMA
-  Beaverhead-Deerlodge National Forest
-  Montana Fish, Wildlife, and Parks
-  Montana State Trust Lands



GARRITY MOUNTAIN WMA STUMPTOWN ADDITION

Deer Lodge County, Montana



0 1 Miles

Note: This map is intended as a
general visual reference only.
GarryAdditionMT_Hydro.mxd
4/2/2019

Legend

- Stream
- Road
- Garry Mountain WMA Stumptown Addition
- 100 foot buffer on both sides of Perennial and Intermittent Streams
- Garry Mtn WMA
- Montana Fish, Wildlife, and Parks
- Montana State Trust Lands

Select Special Status Species on the Garrity Mountain Wildlife Management Area Stumptown Addition			
Species ¹	Habitat	Status ²	Presence on Property ³
Mammals			
Fisher	Mixed conifer forests	SGCN ; USFS Sensitive ; BLM Sensitive	Confirmed Present
Hoary Bat	Conifer and hardwood forests, and riparian corridors	SGCN	Confirmed Present
Little Brown Myotis	Generalists	SGCN	Confirmed Present
Wolverine	Boreal forest and alpine habitats	SGCN ; USFS Proposed Sensitive ; BLM Sensitive	Confirmed Present
Birds			
Black Rosy Finch	Alpine	SGCN ; MBTA	Likely Present
Brown Creeper	Moist conifer forests	SGCN ; MBTA	Likely Present
Cassin's Finch	Drier conifer forests	SGCN ; MBTA	Likely Present
Clark's Nutcracker	Conifer forests dominated by ponderosa pine or Douglas fir	SGCN ; MBTA	Confirmed Present
Evening Grosbeak	Mixed conifer and spruce-fir forests	SGCN ; MBTA	Likely Present
Golden Eagle	Grasslands	SGCN ; BLM Sensitive ; MBTA	Likely Present
Gray-crowned Rosy Finch	Alpine	SGCN ; MBTA	Likely Present
Great Blue Herron	Riparian forests	SGCN ; MBTA	Likely Present
Great Gray Owl	Conifer forests near open meadows	SGCN ; BLM Sensitive ; MBTA	Observed Present
Green-tailed Towhee	Shrub woodlands	SGCN ; MBTA	Likely Present
Lewis's Woodpecker	Riparian forests	SGCN ; BLM Sensitive ; MBTA	Likely Present
Loggerhead Shrike	Shrublands	SGCN ; USFS Sensitive ; MBTA	Likely Present
Northern Goshawk	Mature forests with a dense canopy and an open understory	SGCN ; MBTA	Observed Present
Northern Hawk Owl	Conifer forests	SGCN ; MBTA	Likely Present
Pacific Wren	Moist conifer forests	SGCN ; MBTA	Likely Present
Pileated Woodpecker	Moist conifer forests	SGCN ; MBTA	Likely Present
Veery	Riparian forests	SGCN ; BLM Sensitive ; MBTA	Likely Present
Fish			
Bull Trout	Mountain streams, rivers and lakes	FT ; SGCN ; USFS Sensitive ; BLM Sensitive	Confirmed Present
Westslope Cutthroat Trout	Mountain streams, rivers and lakes	SGCN ; USFS Sensitive ; BLM Sensitive	Confirmed Present
Amphibians			
Western Toad	Wetlands and floodplain pools	SGCN ; USFS Sensitive ; BLM Sensitive	Likely Present

¹Species listed currently occupy or will likely occupy the Garrity Mountain Wildlife Management Area Stumptown Addition property and the adjacent Garrity Mountain Wildlife Management Area and Beaverhead-Deerlodge National Forest. Abbreviated species list is based on information outlined by Montana Fish, Wildlife and Parks in a report titled *Fish and Wildlife Values of the Dvorak Addition to the Garrity Mountain Wildlife Management Area* in 2019.

² Abbreviations used are as follows: FT = Federal Threatened Species under Endangered Species Act (ESA), SGCN = State Species of Greatest Conservation Need, USFS Sensitive or Threatened = U.S. Forest Service Sensitive or Threatened Species, BLM Sensitive = U.S. Bureau of Land Management Sensitive Species, and MBTA = Migratory Bird Treaty Act Protected Species. Montana's 2015 State Wildlife Action Plan (SWAP) identifies SGCN and explains how Montana Fish, Wildlife and Parks determined SGCN species; please see the SWAP for additional information. U.S. Fish and Wildlife Service identifies species listed under ESA and as MBTA; please see their website for additional information.

³ Presence based on information outlined by Montana Fish, Wildlife and Parks in the report listed above.

Garrity Mountain Wildlife Management Area Stumptown Addition Acquisition Crucial Habitats			
Tier 1 Community Types of Greatest Conservation Need ¹	USGS Land Cover ² and Measurements		Associated SGCN ³
Conifer-dominated Forest and Woodland (xeric-mesic)	Middle Rocky Mountain Montane Douglas-fir Forest and Woodland	99.86 Acres	Western Toad, Fisher, Hoary Bat, Little Brown Myotis, Wolverine, Brown Creeper, Cassin's Finch, Clark's Nutcracker, Evening Grosbeak, Great Gray Owl, Green- tailed Towhee, Lewis's Woodpecker, Loggerhead Shrike, Northern Goshawk, Northern Hawk Owl, and Pileated Woodpecker
	Rocky Mountain Lodgepole Pine Forest	43.14 Acres	
	Northern Rocky Mountain Ponderosa Pine Woodland and Savanna	28.02 Acres	
	Rocky Mountain Subalpine Dry- Mesic Spruce-Fir Forest and Woodland	0.22 Acres	
Montane Grasslands	Northern Rocky Mountain Lower Montane, Foothill and Valley Grassland	53.37 Acres	Western Toad, Dwarf Shrew, Hoary Bat, Preble's Shrew, Wolverine, Clark's Nutcracker, Golden Eagle, Great Gray Owl, Green-tailed Towhee, Loggerhead Shrike, and Northern Hawk Owl
	Rocky Mountain Subalpine- Montane Mesic Meadow	6.89 Acres	
	Northern Rocky Mountain Subalpine-Upper Montane Grassland	2.89 Acres	
Sagebrush Steppe	Inter-Mountain Basins Montane Sagebrush Steppe	213.72 Acres	Western Toad, Hoary Bat, Little Brown Myotis, Golden Eagle, Green-tailed Towhee, and Loggerhead Shrike
Deciduous Dominated Forest and Woodland	Rocky Mountain Aspen Forest and Woodland	16.46 Acres	Western Toad, Fisher, Great Gray Owl, and Veery
Floodplain and Riparian	Northern Rocky Mountain Lower Montane Riparian Woodland and Shrubland	112.09 Acres	Western Toad, Fisher, Wolverine, Brown Creeper, Northern Goshawk, Northern Hawk Owl, and Veery
Mountain Streams	Warm Springs Creek and Unnamed Intermittent Streams	2.13 miles	Bull Trout and Westslope Cutthroat Trout
Total Tier 1 Community Types of Greatest Conservation Need	576.66 acres and 2.13 miles		

¹ Montana's 2015 State Wildlife Action Plan (SWAP) identifies Community Types of Greatest Conservation Need (CTGCN) and associated Species of Greatest Conservation Need (SGCN). All CTGCN listed above are identified as Tier 1 CTGCN, which means "there is a clear obligation to use resources to implement conservation actions that provide direct benefit to these community types." Each CTGCN profile in the SWAP identifies associated SGCN, some of which are listed in the *Associated SGCN* column in the above table. Please see the SWAP for additional information.

² *USGS Land Cover* based on the U.S Geological Survey's Gap Analysis Program and aquatic data based on the U.S. Geological Survey's National Hydrography Dataset (NHD). Data sets generated in March, 2019.

³ Please see Footnote 1 for more information.

Photographs
Garrity Mountain Wildlife Management Area
Stumptown Addition



Photographs
Garrity Mountain Wildlife Management Area
Stumptown Addition

